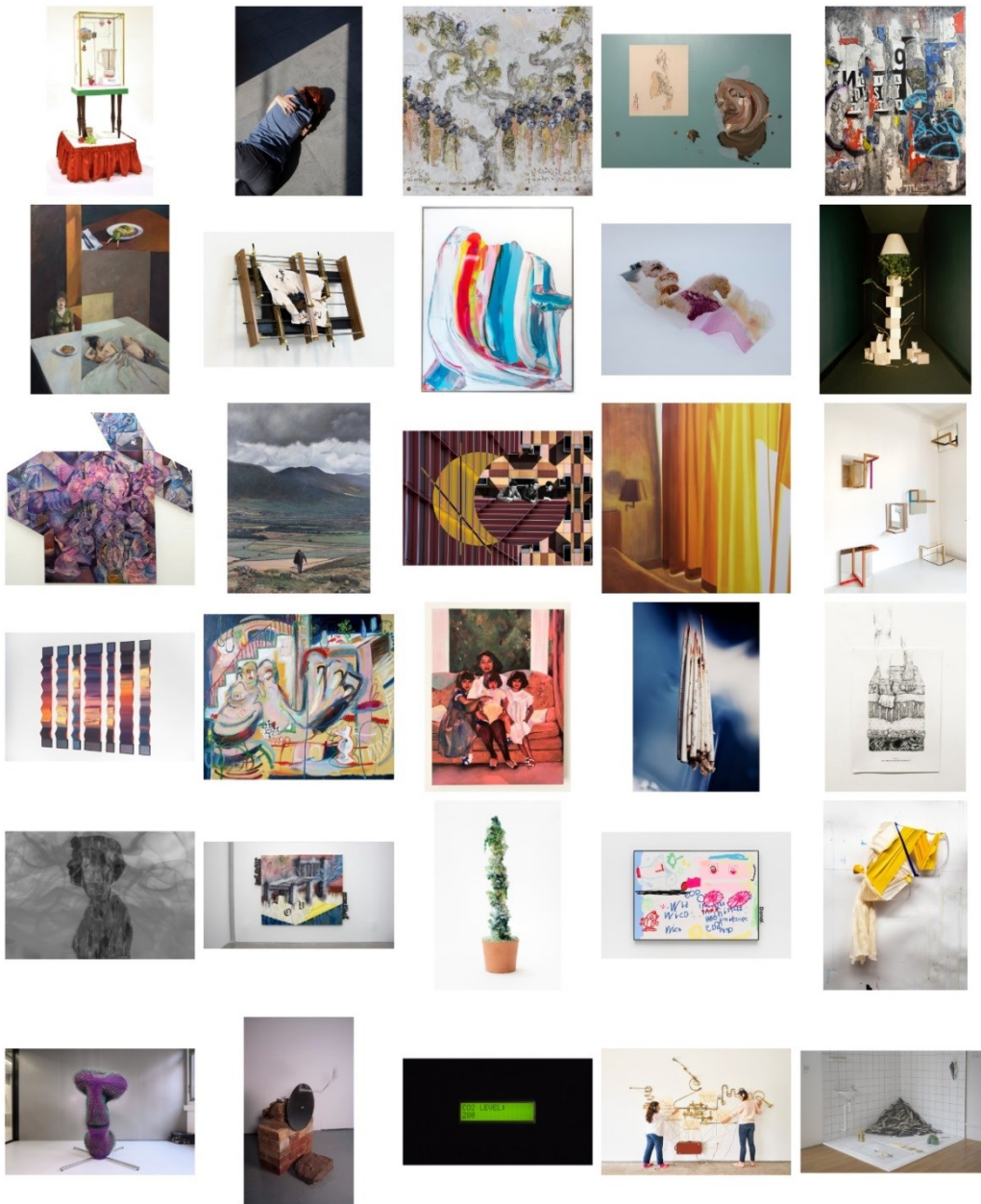


# ASHURST EMERGING ARTIST PRIZE 2020

## Shortlisted Artworks Catalogue



Email: [info@artprize.co.uk](mailto:info@artprize.co.uk)  
Website: [www.artprize.co.uk](http://www.artprize.co.uk)

## Ammara Jabbar

Ammara Jabbar's work is tied to the acquisition and excessive subversion of objects found in a domestic setting which she animating using rudimentary mechanics. The domestic space is a site for an inquisition into the periphery of gender and the performative; the archaeology of objects lends to a didactic view of the embedded virtues in the cataclysmic consequence of the female condition. Narratives and objects appropriated within her work are pertinent to the South-Asian female.



**Artwork:** Chop me a tune, silly

**Medium:** Blender, motor, glass, ornaments, wooden base, quilted fabric

**Dimensions:** 56 x 137 x 14cm

## Anna Davies

Anna Davies is a UK based sculptor and kinetic artist. Her practice is a material-led investigation of personal life experiences and takes the form of a series of ongoing autobiographical sculptural objects. Each specific work explores a particular thought or burden experienced as a woman growing up in the millennial generation and is a material response to the shifting parameters of moral, sexual, ethical or gender-related codes of behaviour experienced by women.

Anna uses domestic objects as the basis of her sculptures in relation to the social and historical construct of domesticity and gender. Inspired by object-oriented philosophy. Materialising the idea that objects have an agency beyond human capacities, and therefore that objects hold the potential for multiple interpretations. She animates this through mechanical and kinetic technologies in order to represent gestures and movement in relation to gender.



**Artwork:** Aren't you just exhausted by the same old shit?  
**Medium:** Bricks, clay, wood, aluminium, motor and batteries  
**Dimensions:** 100 x 100 x 150cm

## Charlie Calder-Potts

Charlie Calder-Potts is a British artist based in Warwickshire. Her work looks at history and its repetitive nature; the value of our heritage and our similarities to previous generations and to each other.

Using mixed media Charlie's work is a form of reportage bringing together historical elements and anonymous individuals going about their everyday lives be it commuting on the Overground in Hackney or on the streets of Erbil in Iraq.



**Artwork:** In the green curls of trees  
**Medium:** Oil, ink, pencil, gold leaf on wood panel  
**Dimensions:** 90 x 90cm

## Donal Sturt

UK based artist Donal Sturt creates works that take inspiration from groups outside the traditional art world such as children and those from the neuro-diverse community.

Using found objects as well as paint, his paintings are informed by his own childhood artworks, as well as the children's workshops he hosts, which act as an opportunity for children to draw freely and develop their skills at a natural pace. All young children go through almost identical stages of artistic development and it is this that he finds particularly interesting.



**Artwork:** Edisptqjo

**Medium:** Oil, acrylic, varnish, industry marker and pencil on panel

**Dimensions:** 170.5 x 112.5cm

## Emanuel Gollob

Artist Emanuel Gollob is based in Austria and runs an artistic research studio looking at the intersection of human-AI interaction, neuroscience and robotics. He graduated from the University of Applied Arts Vienna. He believes that art has to come into the centre of society and makes work that bridges different branches of knowledge holistically. Emanuel wants to make it easy for spectators from all kinds of backgrounds to engage with the work.



**Artwork:** Doing Nothing with AI 1.0  
**Medium:** Robotic arm and various parts  
**Dimensions:** 180 x 80 x 60cm

## Gasediel

Trained at the Versailles School of Mural Art, Gasediel is a figurative artist who creates cement paintings. Gasediel captures the turning point when an “old used street wall” becomes an aesthetic, poetic, remnant of our humanity before it passes away. Rather than collecting elements directly from the street walls she’s inspired by, she creates work in paint and on textures such as layered cement or concrete. Her works invite us to pause and think about the stories these street walls may offer.



**Artwork: 9**

**Medium: Mixed media on wood**

**Dimensions: 80 x 60cm**

## Grace Su

Grace Su is a Chinese-born artist based in London. Her paintings reflect material responses to her mental and physical feelings, often centering on emotions such as loneliness, isolation. Her representation of women often acts as a reappropriation of historical paintings produced by men. In reappropriating female images from a perspective of art history, her work resonates with the context of the 'personal and historical'. Her works are mostly intimate portraits that deal with a strong spatial environment, reflecting the atmosphere of loneliness.



**Artwork:** Safe Haven  
**Medium:** Oil on canvas  
**Dimensions:** 190 x 140cm



## Haeji Min

Haeji Min, who studied at Slade School of Fine Art, explores the life and death of humans in mirroring the life cycle of plants through painting, illustration, sculpture, and video. By creating virtual plant characters within her works, she offers positive connotations of companionship, sentimentality, and representation of a caregiver. For the artist, this is reminiscent of a simpler life in childhood, reminding Haeji of strolling down grass tracks to her homes in Canada and New Zealand or visiting botanical gardens to escape real-life struggles and worries.

However, this reminiscing also exists with a negative undertone as her pieces explore the destruction of natural life and the terror which comes with being unable to detect the invisible effects we are having on humans in the future.



**Artwork:** My Multiple Egos

**Medium:** Oil on canvas

**Dimensions:** 250 x 280cm

## India Nielsen

Working across a variety of media India Nielsen's practice is primarily concerned with language as an imperfect communicative, emotive and representational tool. In our increasingly virtual world, the source of an image has become near impossible to trace. The entity of a 'thing' now lies entirely in the language used to represent it.

Nielsen's work deconstructs this language, digging behind it in a ritualised attempt to get to the underlying 'thing' but finding nothing. In the process of unpacking and deconstructing visual languages, she then begins to stitch them together into a unified living form. Her paintings combine a variety of these rendered languages that come together to vibrate on different registers within a single unified body of the work. Through this process, Nielsen is effectively constructing her own mythologies. She is no longer trying to follow the chain of images back to their provenance but instead employs the formula of myth to construct her own world. Fragments of letters, words and images are carved into the paint and shaved out of fur to create animistic and mystical figures, swiped from pop culture, art history books, or transcribed from memory.



**Artwork:** Love is (Lil Beast on the Block)  
**Medium:** Oil on canvas with modular frame  
**Dimensions:** 180 x 210cm

## James Hayes

Based in the South West of Ireland, James Hayes is a painter, illustrator and qualified architect. His default state of being is creating images as a way of making sense of the world around him, through a practice centred around oil painting and pencil drawing. He is interested in the way in which our experience of places and the relationships we forge with them exist as an ever evolving, jumbled and reciprocal flow across the material, immaterial and emotional realms. His work is often an exploration of this complex relationship between self and surroundings, attempting to reveal this quiet unseen interplay.



**Artwork:** Wanderer beneath the Sea of Cloud

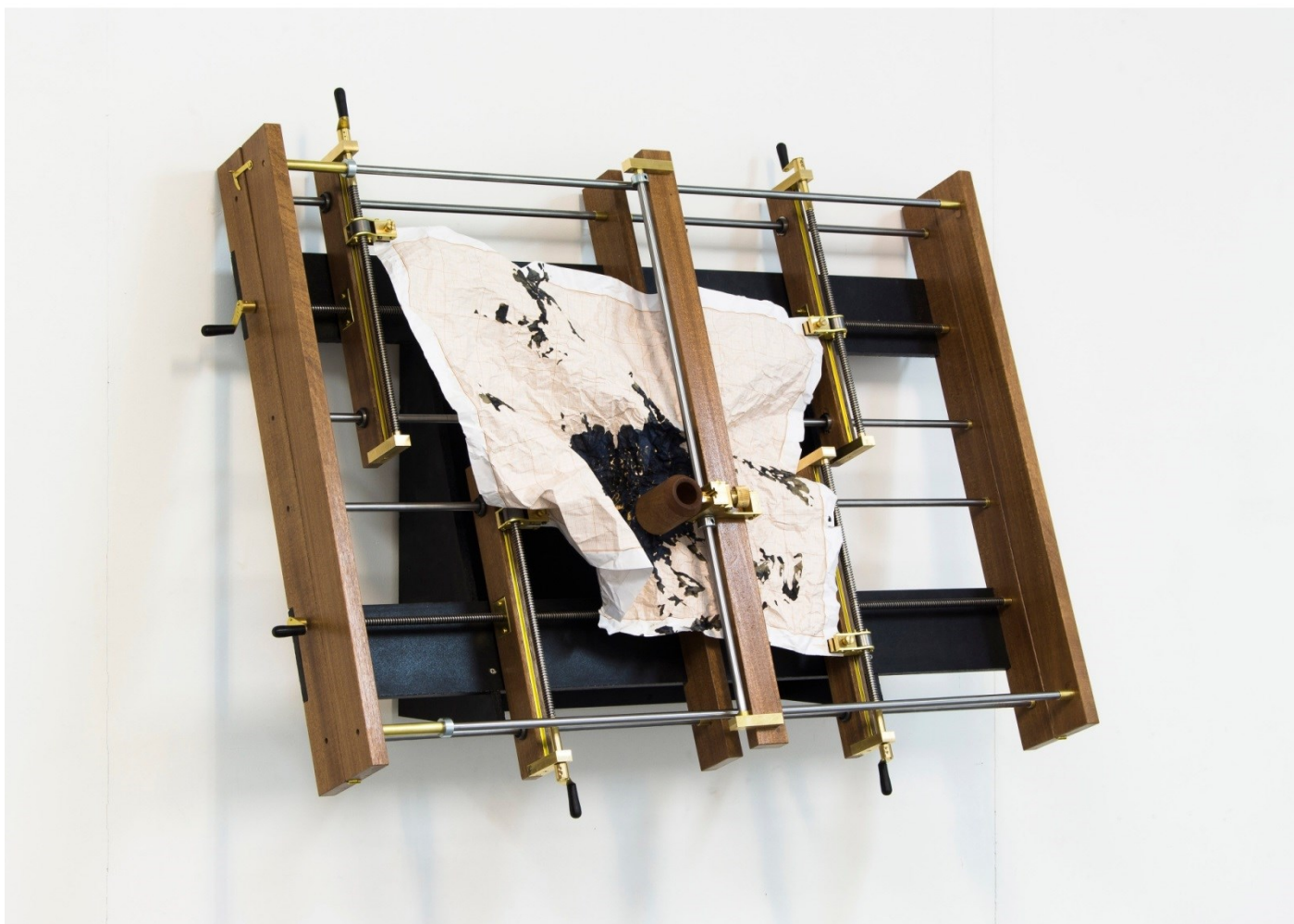
**Medium:** Oil on canvas

**Dimensions:** 100 x76cm

## Kazuki Nishinaga

Tokyo based Kazuki Nishinaga is a sculptor who recently graduated from Slade School of Art in London. For Kazuki his sculptures are comparable to Science or Philosophy, providing a means of understanding the world. He is interested in exploring human perspectives and their limitations through his practice.

It is his skill in handcrafting techniques that plays an important role in creating a balance between the contradictory elements within his work, for example, using traditional carving and machine made elements. Hands are vital organs in realising the mind's will to control a form, yet they are also sensors that understand the way materials can stubbornly resist manipulation.

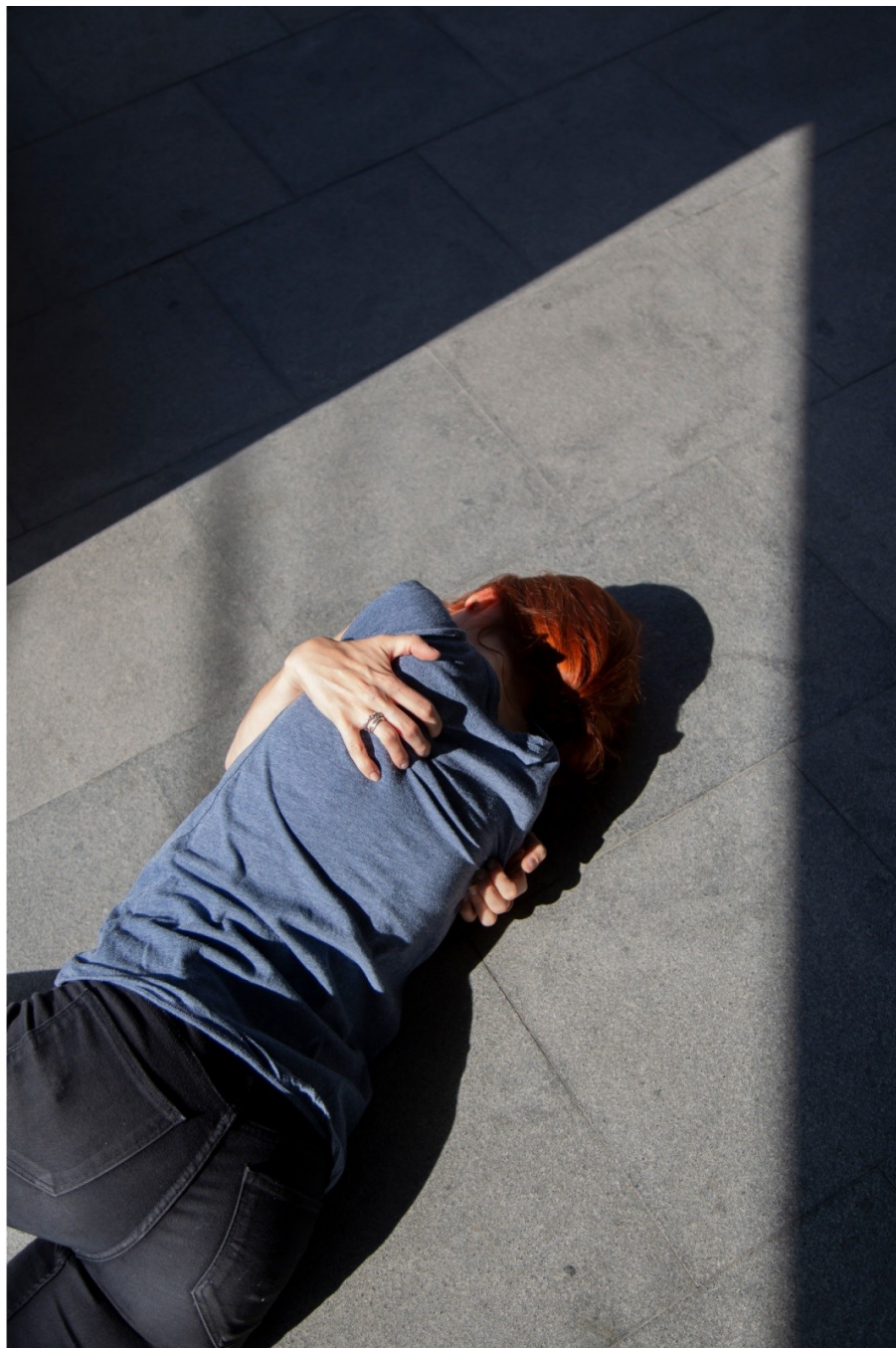


**Artwork:** Paper Crawler  
**Medium:** Mixed media  
**Dimensions:** 80 x 106 x 36cm

## Liliana Zaharia

Liliana Zaharia is a multidisciplinary artist with a BA in Fine Art Photography. Her work takes on a critical, observational view of the everyday life and explores themes of identity and belonging. Often at the border between documentary and fiction, she uses photography as a main medium in her work while exploring video, text or performance in accordance to the project.

Central aspects of her research involve the semantics of the everyday and unexceptional, bodily gesture and photography as a document for performance. Liliana's practice involves long term projects where she develops strong relationships with her subjects in order to enunciate a level of intimacy for her series. Recent works explore the representation of chronic pain through fictive constructions of body posturing and gestures which are informed by research into the history of art and representation of physical pain.



**Artwork:** On a scale from 1 to 10, Untitled 3

**Medium:** C-type photograph

**Dimensions:** 32 x 40cm

## Maddie Yuille

Maddie Yuille is a painter who lives and works in London, UK. Her paintings depict fragments of familiar domestic environments devoid of people, in which she attempts to make physical the momentary sensation of the familiar becoming strange, the inanimate enlivened. She explores the boundaries between spaces – of interior and exterior, the known and unknown – and the possibility of bridging these distances. Each image holds a tension of expectation – that the human presence implied may be just about to appear. With a background in documentary making, Maddie sees each painting as a “cut-away” – a fragmentary glimpse of something seemingly ordinary, used to clarify a wider narrative. Each painting is built up in layers of translucent colours, creating a shifting world in which there resides a potentiality – of the familiar becoming strange or wondrous.



**Artwork:** The Driftless Area II

**Medium:** Acrylic on canvas

**Dimensions:** 140 x 140cm

## Marit Geraldine Bostad

Marit Geraldine Bostad is an abstract colourist who works and lives in Horten Vestfold County, Norway. She investigates themes such as the inner psyche, memories and human interaction through her series of paintings. She blends colours by pouring paint directly onto the canvas using a variety of tools, seldom using the paintbrush - to create diverse, versatile effects with broad expressive strokes.

Marit Geraldine explores the Nordic Colour tradition in a bold new direction, blending tone to tone pastels with sparks of fluorescent and manifesting her own personal psychic state onto the canvas. She builds up and breaks down the diverse elements of her personal experience and brings them together in a new plastic dimension. Through this, she expresses universal archetypes that transcend the particular conditions of her own life, setting the scene for the audience to bring their own meaning to her work.



**Artwork:** Nordic Signals  
**Medium:** Acrylic on canvas  
**Dimensions:** 105 x 85cm

## Meg Shirayama

Geometry, form, and colour are the cornerstones of Meg Shirayama artistic practice. The artist was born in Japan and brought up in the UK and through her work explores the universal language of geometrics that can be experienced mutually across various perceptual standpoints. Meg draws inspiration from elemental geometries found in everyday utilitarian objects. Taking interest in the clarity of basic forms, economic design and repurposing possibilities by shifting the perspective. Her work consists of objects rendered in wood, partially painted in luminous colours. She uses painted areas to draw attention to the shapes, contrasting the surfaces between painted and unpainted to signify that element can be arranged in different angles. By employing the visual language utilised in Minimal Abstraction, Meg blurs the boundary of art and applied object by questioning the purpose of the object through its appearance and presentation.



**Artwork:** Mirrored-handrail-paintings

**Medium:** Repurposed mirrors and bamboo plywood

**Dimensions:** 30 x 30cm



## Naoki Yamaji

Naoki Yamaji is a Japanese artist currently based in the Netherlands. He seeks to mix Japanese and Western culture through the medium of acrylic and oil paint. His works explore the growing redundancy the human race experiences as our societies become increasingly mechanised, and how excessive capitalism moves to replace mankind with technology.



**Artwork:** Self-portrait No. 4  
**Medium:** Oil, acrylic, and paper on canvas  
**Dimensions:** 50 x 70cm

## Nicole Pietrantonì

US-based Nicole Pietrantonì's practice explores the complex relationship between human beings and nature via installations, artists' books, and works on paper. She is interested in interrogating the tradition of landscape photography and the tension between beautiful, picturesque images of nature and the near-constant threat of environmental change. She asks us to consider how we can hold what feels like a real, subjective experience of beauty, desire, and joy together with an overarching concern with structural questions about complicity and consumption.



**Artwork:** Sunset Strips II  
**Medium:** Inkjet on Kozo paper, spraypaint  
**Dimensions:** 91 x 102cm

## Pippa El-Kadhi Brown

Pippa El-Kadhi Brown's practice holds a particular focus on the domestic home. Through her paintings she explores how we interact with space, both physically and emotionally, and consider the domestic home as our 'natural environment', an ever-evolving habitat which we have adapted to both merge with and coexist beside.

Pippa enjoys the fluid and visceral behaviour of paint, particularly oil. Often applied impasto, directly from the tube, she handles the paint with a sculptural approach. Using materiality and gesture, she aims to create a tangible and conscious perception of space.



**Artwork:** Takeaway  
**Medium:** Oil on canvas  
**Dimensions:** 238 x 209cm

## Rachel Rodrigues

Rachel Rodrigues is a British Indian artist, who was born and grew up in North London. Alongside her art practice, she is completing her doctoral research in psychology with a focus on mental health. Her paintings explore human experience using both a biographical and psychological framework.

One aim of her work is to pay tribute to the moments in time that help shape our identity. She does this by combining her psychological expertise, with her own personal memories and reflections, often painting scenes of everyday life. The colour palette, the lighting, the expressions and body language of her subjects - how they may or may not be interacting - all give clues into their inner experience and how they relate to others.



**Artwork:** The Sitting Room in Summer

**Medium:** Oil and acrylic on board

**Dimensions:** 40.6 x 30.5cm

## Samuel Padfield

Samuel Padfield is a UK based artist whose work is a response to the uncanny and banal world of commercial lifestyle imagery. He is interested in the problematics that surround this generic idea of lifestyle, and to what extent this language plays a more active role in influencing the behaviour of its intended audience. His resulting sculptures oscillate between image and object, and often explore the tension between the depiction of space and physical structure. Padfield employs a range of laborious painting, printing, textile, casting, and metal fabrication techniques in the production of these objects.



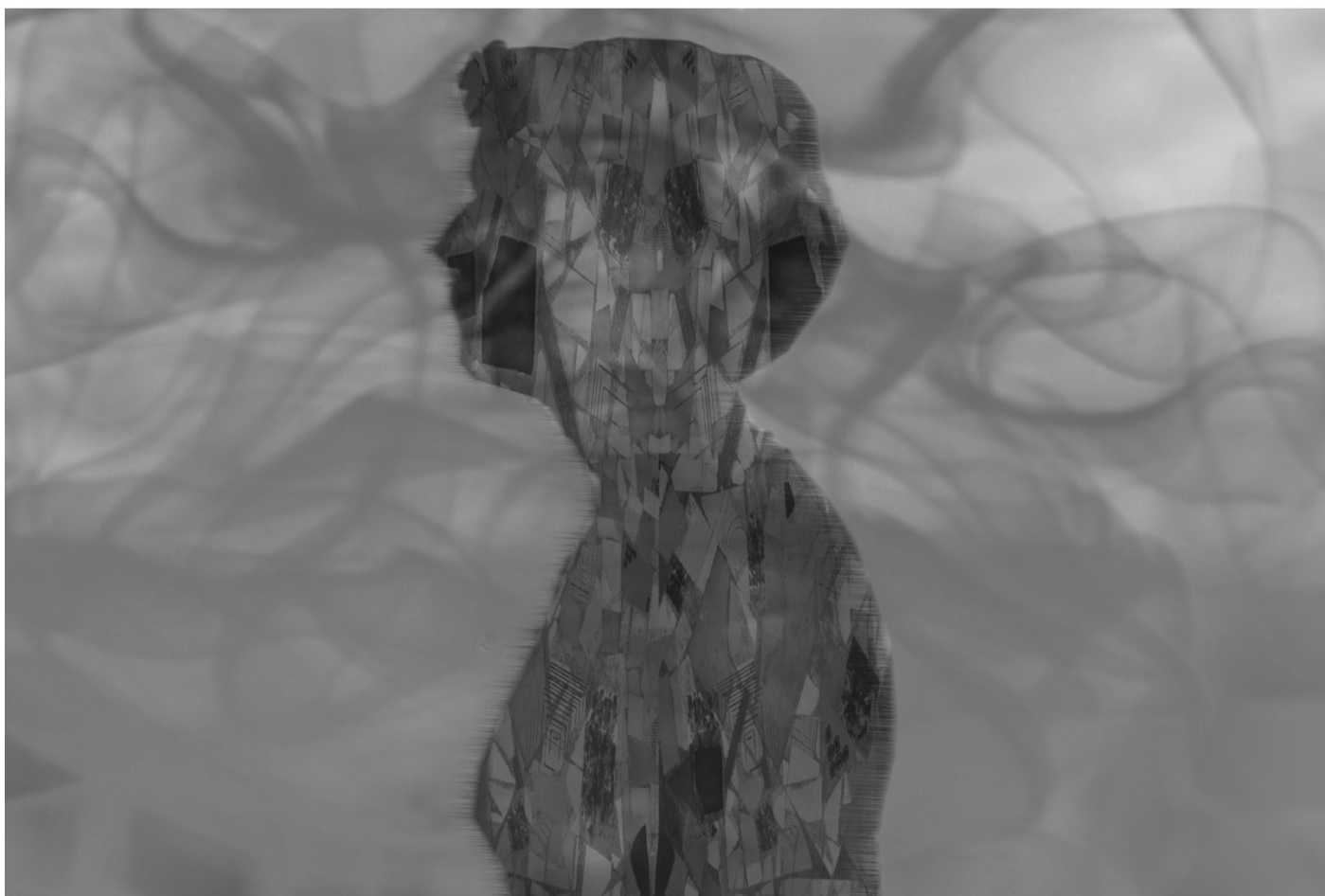
**Artwork:** Study for reclining figure

**Medium:** Heat formed cast acrylic, inkjet print, hand knotted wool tapestry

**Dimensions:** 90 x 35 x 35cm

## Sara Argiolas

Italian artist Sara Argiolas works with conceptual photography and photo manipulation. She explores the representation of reality as seen from her viewpoint, manipulating images to make them a subjective interpretation.

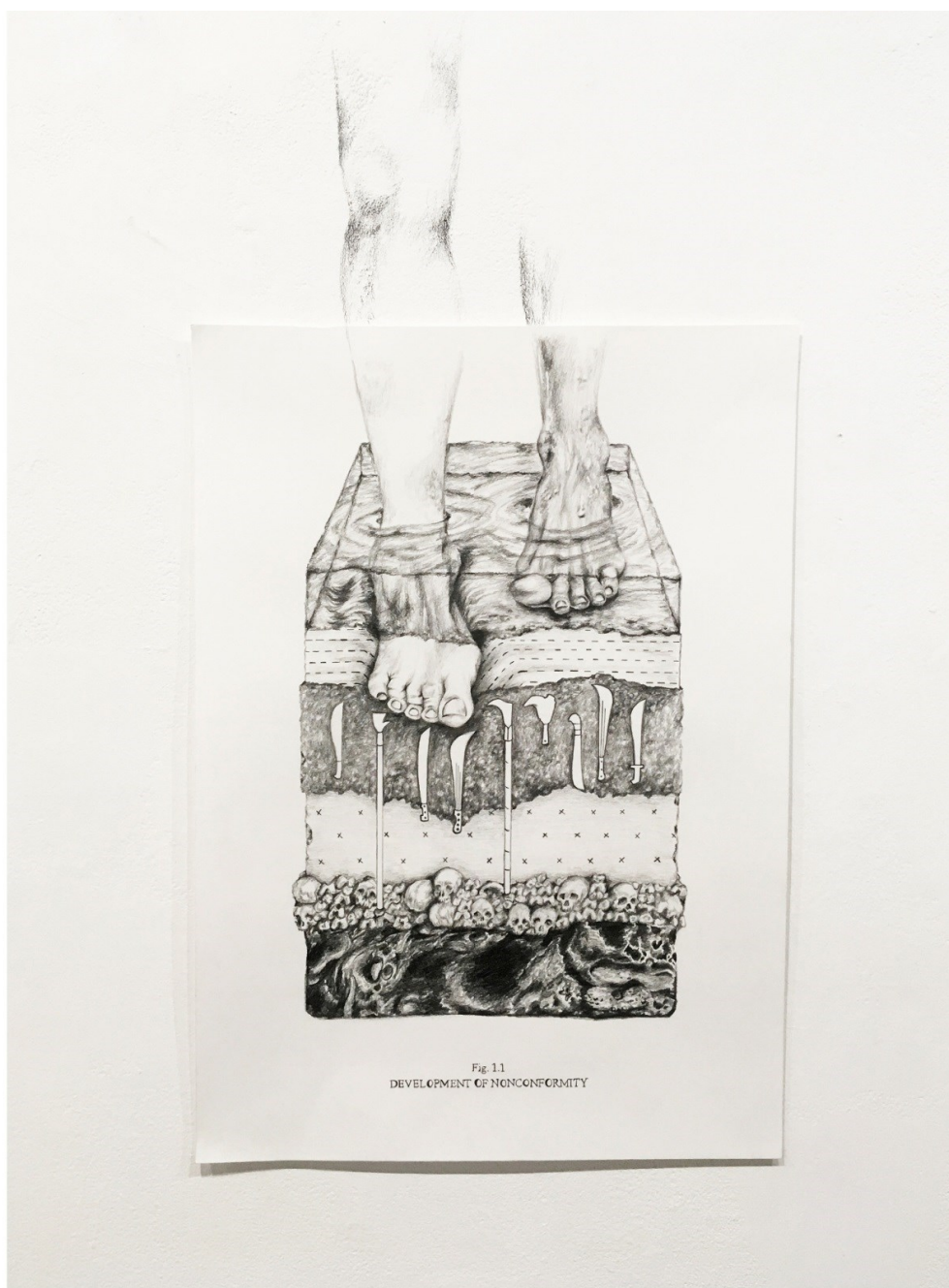


**Artwork:** Thoughts #6  
**Medium:** Photograph  
**Dimensions:** 30 x 45cm

## Shannon Alonzo

Trinidadian Artist and Designer Shannon Alonzo's practice embodies the exploration of Caribbean diaspora identity, specifically, the tension created through historical omission and the desire to re-imagine a collective sense of self. Her interest in these themes stems from several years of work in a diverse cross-section of visual arts fields in both Trinidad and the U.K. Through these experiences, the works have taken shape as illustrations, garment sculptures and fabric collages, that draw heavily on archival photographs and contain renderings of symbolic artefact, cultural expression and bodily adornment.

Shannon currently works as an artist researcher focusing on probing the connections that bind land and shared sentiment, a vessel where inherited memories commingle and the identity of Caribbean peoples is reshaped and reclaimed. The viewer is encouraged to reflect on our complex relationship to the past, as well as the triumphs that regenerate our sense of collective belonging.



**Artwork:** Development of Nonconformity

**Medium:** Pencil on paper

**Dimensions:** 42 x 60cm

## Sonia Bensouda

Sonia Bensouda was born in France and grew up in Morocco. She received a BA in Interior Architecture in Lyon, France before moving to London to study for a Master's degree in interior and Spatial Design at Chelsea College of Art.

Using collage Sonia explores her upbringing and feeling of belonging to two contrasting cultures, playfully looking at our relationship with real and virtual spaces. Collage has become the best medium for Sonia to express this. Researching colour combinations and developing palettes is a significant part of her process. The artist's background as an interior architect has shaped her passion for abstract geometry and composition. Sonia's goal is to combine these elements into a graphic visual language that is universally understandable.



**Artwork:** City Boys

**Medium:** Photography and Digital Collage on giclee print - Limited print edition of 50

**Dimensions:** 59 x 42cm



## Soo Hyeon Kim

Born in Seoul, South Korea and currently based in London, UK after completing a Masters at the Royal College of Art. Soo Hyeon Kim is a Sculptor who explores the relationship between time and natural phenomena which occur through chemical and physical forces: strata, woodgrains, stalagmites, crystals, and coral. In her practice she mimics these processes in nature through the construction of an ecosystem on which the passage of time is inferred.

Using paraffin wax, a versatile material, Soo Hyeon creates an environment that conjures up the notion of a subject lost in time, in the sense that some events are impossible to witness from beginning to end. To do this, the artist uses wax, melting it with heat lamps so it accumulates and grows over time like a plant or living organism. The continuous growth and change in appearance of the mounds from their dripping form to their white crystals resembles a capricious but eternal nature.



**Artwork:** Soft Pulse

**Medium:** Paraffin wax, pigment, ceramic pot

**Dimensions:** 17 x 17 x 70cm

## Stefan J Schaffeld

Stefan J Schaffeld is an emerging Dutch artist from Eindhoven, currently residing in Germany. He studies Fine Art through the distant learning arm of the University for the Creative Arts (UCA), UK.

Stefan's practice responds to social and cultural expectations that result in a destabilised Self. His current body of work raises questions about the superficiality of beauty and the desire to seek meaning in relation to our body and skin. Through physical processes of material transformation, he explores how vulnerability and fragmentation are deliberately censored from our images, and how folds and invisible marks are flattened out. His practice is informed by his experience of a mental crisis which precipitated persisting feelings of vulnerability and fragmentation.



**Artwork:** Sculptural Skin  
**Medium:** Fabric, acrylic paint, metal  
**Dimensions:** 40 x 25 x 5cm

## Steve Parker

Steve Parker is an artist, musician, and curator living in Austin, Texas. He creates communal, democratic work to examine history, systems, and behaviour. Steve's projects include elaborate civic rituals for humans, animals, and machines; listening sculptures modelled after obsolete surveillance tools; and cathartic transportation symphonies for operators of cars, pedicabs, and bicycles. He works with salvaged musical instruments, amateur choirs, marching bands, birders, pedicab fleets, urban bat colonies, honeybee hives, and flocks of grackles.



**Artwork:** Ghost Box

**Medium:** Salvaged brass, tactical maps, scores on paper, wires, map pins, electronics, audio, instrument case

**Dimensions:** 579 x 365cm

## Tatjana Panek

Tatjana Panek is a French/German artist based in London. She has completed a BA and MA in Photography at the London College of Communication, UAL. Tatjana is intrigued by the relationship between two human beings, the couple, which becomes a singular being, a world of its own. It is not a static state. It is complex and an ever-growing, ever-changing organism.



**Artwork:** The Love I Feel  
**Medium:** C-Type print on aluminium  
**Dimensions:** 91 x 61cm

## Sine Zheng

Sine Zheng is a photographer based in London. After completing a BFA degree at Parsons School of Design, the New School of Arts in New York, she continues on with a Photography MA degree at the Royal College of Art. Her work focuses on the relationship between nature and humankind, questioning the impact of modernisation on our planet and has been exhibited in America, Europe and China.



**Artwork:** Tree

**Medium:** C-type print photography

**Dimensions:** 100 x 128cm

## Yifeat Ziv

Yifeat Ziv is a vocalist, composer, free improviser and sound artist, who holds an MA in Sound Arts from the London College of Communications, University of the Arts London. In her sound performances and installations, Yifeat aspires to create situations where an active listening experience can emerge; an invitation to critically engage with sound. She combines voice(s), electronics, field recordings and text into sound works that derive from her research of the human voice, technology, acoustic ecology and listening practices.



**Artwork:** The Echo of Our Breath

**Medium:** Installation

**Dimensions:** 300 x 300 x 300cm

## Ziquan Wang

The multiple identities of artist and game designer give Ziquan a unique perspective through computer 3D data. The mapping of 2D and 3D, the re-entry of virtual and reality, and the absurdity brought about by computer vision are all reactions to social development.

Using fabric and some everyday objects, and through Internet and computer technology, he finds many interesting perspectives. Rather than a programmer Ziquan just needs interesting points from the outside to fuel new practices in his artistic field.



**Artwork:** Fake Reality  
**Medium:** Fabric, tiles  
**Dimensions:** 200 x 200 x 200cm